



Nitai
MEDICAL & COSMETIC CENTRE

Dermal Fillers
INFORMATION GUIDE

Dermal fillers are used to fill, plump, or enhance an area...

Dermal fillers fill grooves and hollows that appear with age, such as volume loss in the lips and cheeks. Volume loss occurs in the whole face but cheeks, tear-troughs, lips and jowls are most commonly treated.

More and more people are using anti-wrinkle injections in conjunction with dermal fillers to contour and lift the face.

Anti-wrinkle relaxers are used to relax the muscles and, in turn, stop the movement of muscles which cause wrinkles. These kinds of wrinkles generally form on the top section of your face, from your hairline to below your eyes.

DERMAL FILLERS VS. ANTI-WRINKLE INJECTIONS

It's common for people to confuse dermal fillers with anti-wrinkle injections. While dermal fillers and wrinkle relaxers are both injectables, they work in entirely different ways. Through combining these treatments it is possible to achieve a refreshed and rejuvenated appearance.

Dermal fillers

As you begin to age, there are shifts in facial fat pads causing volume loss and sagging in the face. These facial concerns can be treated with dermal fillers.

Dermal fillers are made from a complex sugar that is naturally occurring in the body, to fill a particular area. They are injected into the surface layers of the skin, under the skin, or in the deeper tissue with the purpose to restore volume and reduce the signs of ageing. Lips are one of the most popular areas for treatment, as well a volume loss under eyes and in cheeks.

Anti-wrinkle injections

Facial expressions such as smiling or frowning are due to muscle movements. With chronic use, the formation of wrinkles occurs. Anti-wrinkle injections are required to treat dynamic and static wrinkles.

Anti-wrinkle injections involve a muscle-relaxing agent, which reduces movement of the muscle, preventing the formation of wrinkles in the first place or preventing wrinkles from worsening over time. Crow's feet and frown lines in-between the brows are the most popular area for anti-wrinkle injections.



IN WHICH AREA CAN DERMAL FILLERS BE USED?

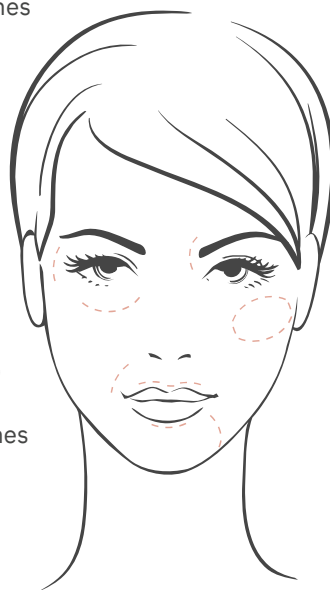
Dermal fillers are used to fill in already existing and static lines, deep creases and areas which have lost volume over time. These are the kind of wrinkles which are visible even when your face is relaxed. They form due to loss of fat pads

The most common areas for dermal fillers are:

Fine lines
Deep lines
Tear troughs
Cheeks
Nasolabial folds

Lips (to enhance or improve lip symmetry)

Marionette lines



Dermal fillers can also be used for:

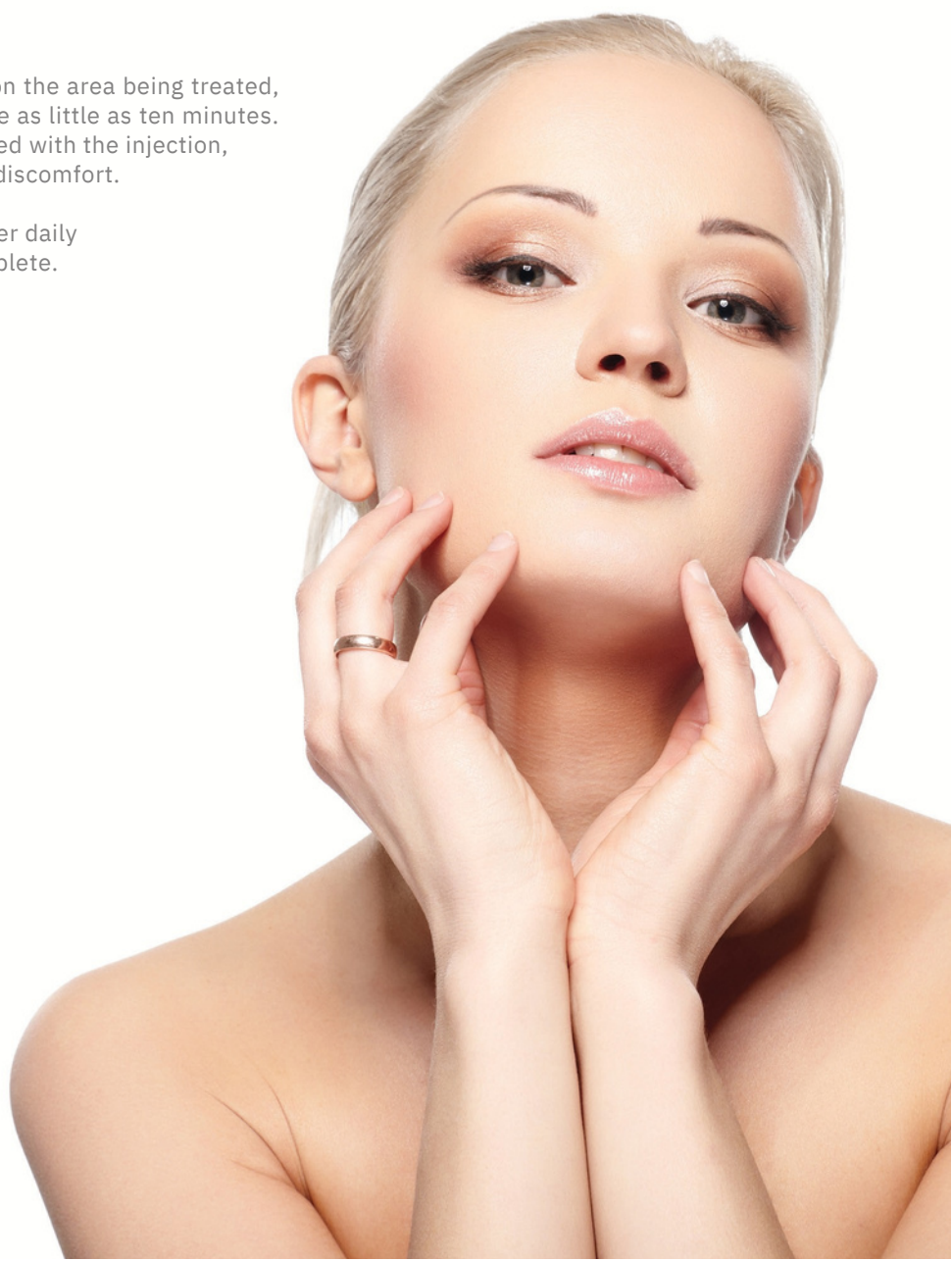
Temple Hollows
Non-surgical rhinoplasty (nose)
Chin enhancement

THE DERMAL FILLER TREATMENT

- 1. The area to be treated is cleansed thoroughly with medical grade antiseptic**
- 2. An ice pad or anaesthetic cream may be applied to reduce discomfort**
- 3. A fine needle or cannula used by the doctor to place the dermal fillers into your area of concern**
- 4. The results are seen immediately**
- 5. The final results are seen 4-6 weeks after treatment**

The duration of treatment will depend on the area being treated, although it is usually quick and may take as little as ten minutes. While some mild stinging can be expected with the injection, most patients only experience minimal discomfort.

You will be able to return to work or other daily activities shortly after treatment is complete.



MYTHS

Many patients are confused by the amount of misleading information regarding the outcomes of dermal filler treatment. Deciding to make cosmetic enhancements to your body is a very personal and individualised process and as such, knowing the facts is a must.

Myth #1

Anti-wrinkle injections and dermal fillers work the same

By now, you know this is most certainly a myth. While both dermal fillers and anti-wrinkle injections are a fast, effective and safe way to restore youthful fullness, dermal fillers are injected into the sub-dermal area to fill wrinkles and creases, and anti-wrinkle injections are injected into the muscle to paralyse and eliminate the appearance of wrinkles.

Myth #2

Lip injections cause 'trout pout'

By visiting an experienced practitioner, subtle lip enhancement procedures are possible. Ensure you receive a thorough assessment of your facial aesthetics and discuss the recommended treatment doses for a natural, but glamorous looking outcome.

Myth #3

Cheek injections cause 'pillow face'

It is true that using too much filler can result in an overly plump face. Many famous faces have certainly been treated with excessive dermal filler in their cheeks. When these treatments are carried out by a properly trained practitioner with an experienced eye, these outcomes can be avoided. As a general rule, it is best to undertreat and add more at a later date.

Myth #4

Dermal filler injections are not reversible

Some dermal fillers are reversible. If you do not like the results achieved with your dermal filler treatment, rest assured. Your facial features will slowly return to their initial appearance, and if need be, there are treatments available that can quickly revert the result.

Myth #5

Injections are painful

If you know you have trouble tolerating needles; your practitioner can apply numbing cream to ensure patient comfort. These days, beautifying yourself doesn't need to hurt!

HOW MUCH CAN I EXPECT TO PAY?

Some of our most frequent enquiries are about cost. It's also really hard to give any exact price as every patient has different needs.

It is important to consider there are different dermal filler products available to you. The mark of difference between each product can include: the area they are suitable for, the amount required, the overall quality of the product, and possible side effects. Though some products are less expensive, they require more product than premium-quality dermal filler injections Nitai Medical and Cosmetic Centre offers.

Cost of dermal fillers

The starting price for fillers at Nitai Medical and Cosmetic Centre range from \$495 - \$690. This price will increase depending on the amount of fillers used per ml.

The amount of dermal filler product necessary strongly depends on the individual person, treatment area and desired look. Dosage for premium dermal filler is scientifically determined and results often improve with subsequent treatment. Pricing is unique to every patient and will require a consultation to determine a precise cost.



Dr Shobhna Singh

Dr Shobhna Singh has decades of experience treating a wide range of skin conditions, with a special interest in the provision of anti-wrinkle injectable treatment. She has an intense passion for, and combined expertise in, dermatology and skin cancer medicine, pharmacology, and the proponent factors associated with skin care treatment and anti-ageing methods. For the patient, this guarantees the most suitable and effective treatment plan to assist in achieving healthy skin. Accordingly, the concerns you may have with your facial lines, wrinkles, or appearance can be viewed in a broader, holistic approach. Dr Shobhna will tailor a personal treatment plan to best navigate the desired outcome.

Contact Nitai

64 Lincoln Rd, Essendon,
Vic, 3040, Australia

Call: (03) 9300 1244

Fax: (03) 9304 2519

Email: admin@nitai.com.au

Monday: 8:30am to 7:00pm

Tuesday: 8:30am to 4:30pm / 5:00pm

Wednesday: 8:30am to 4:30pm / 5:00pm

Thursday: 8:30am to 4:30pm / 5:00pm

Friday: 8:30am to 4:30pm / 5:00pm

Appointments after 5pm do require a \$50 deposit
which is credited towards future treatments.

[CLICK TO BOOK AN APPOINTMENT](#)

Disclaimer:

Individual results may vary. Surgery and all health regulated services carry risks which need to be discussed with your doctor. It is always recommended to seek a second opinion.